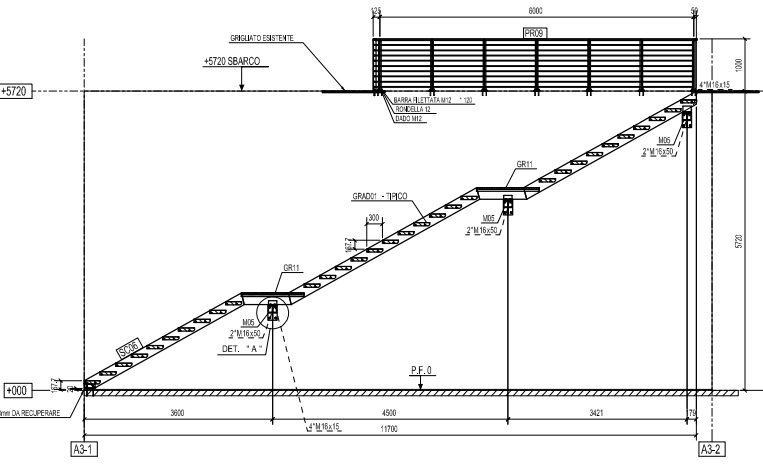
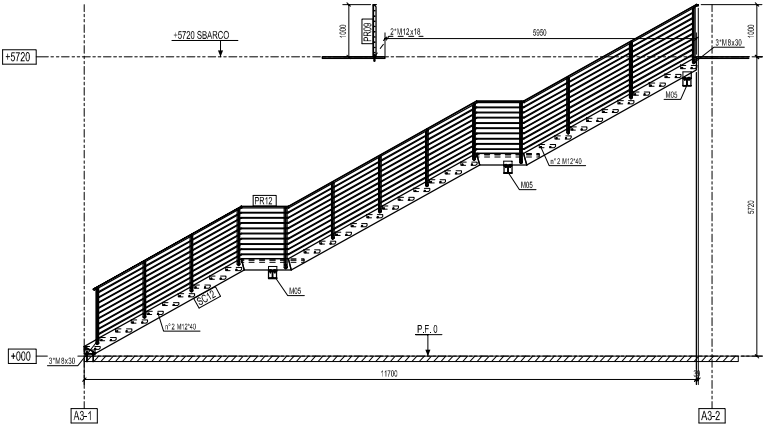


LA SCALA "A3" E' STATA COSTRUITA
CON 2cm IN MENO IN ALTEZZA
PER UNIFORMARLA ALLA "A2"
DOVRA' ESSERE QUINDI POSIONATA
IN CANTIERE CON UNA LEGGERA PENDENZA

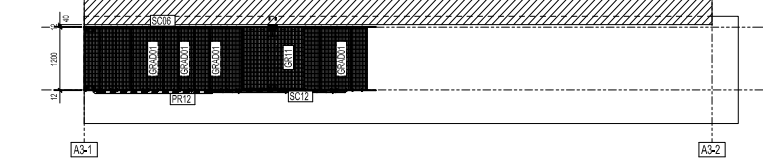
VISTA SU - A3-FILO A3-A



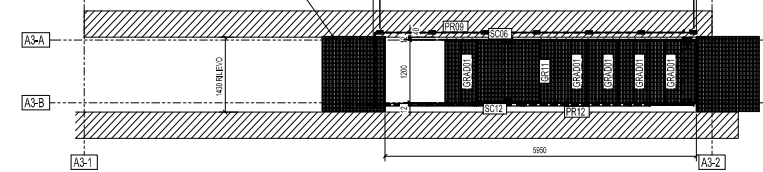
VISTA SU - A3-FILO A3-B



VISTA SU - A3-PIANTA +000

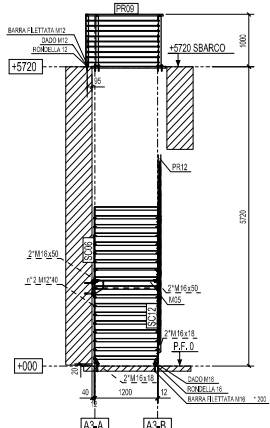
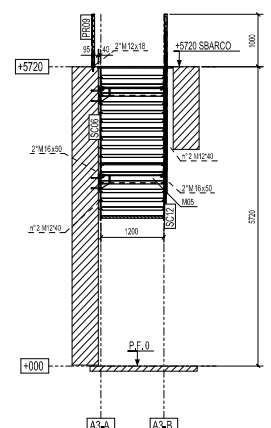


VISTA SU - A3-PIANTA +5720

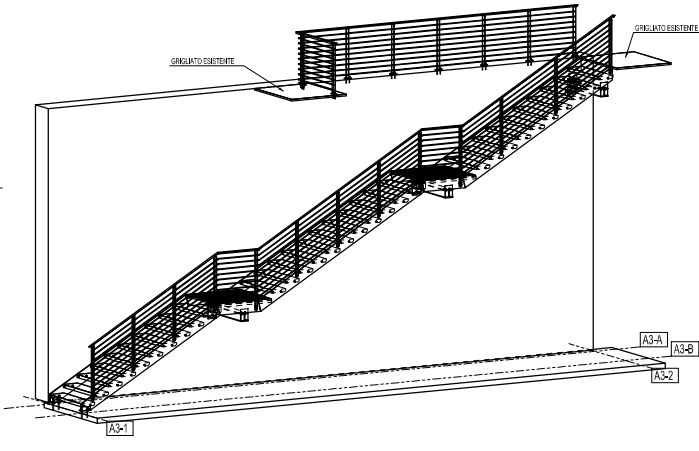


VISTA SU - A3-PICCHETTO A3-2

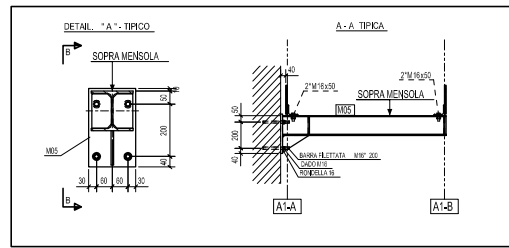
VISTA SU - A3-PICCHETTO A3-1



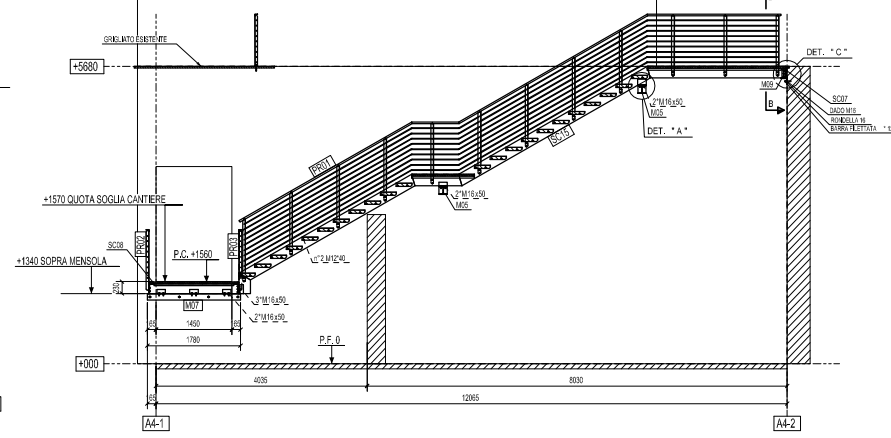
ASSONOMETRIA SU - SCALA A3



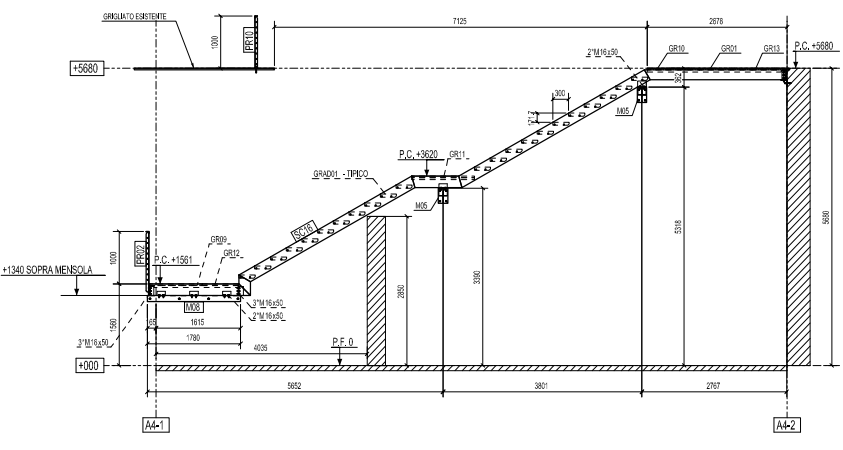
DETTAGLIO E SEZIONE TIPICA DI FISSAGGIO MENSOLA "M05" AL C.A.



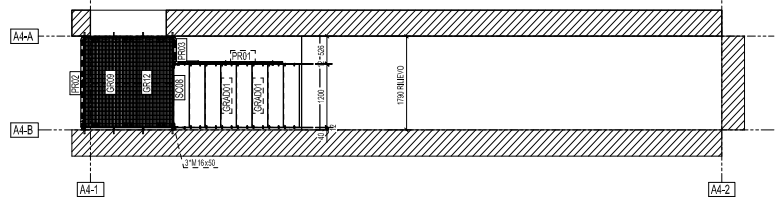
VISTA SU - A4-FILO A4-A



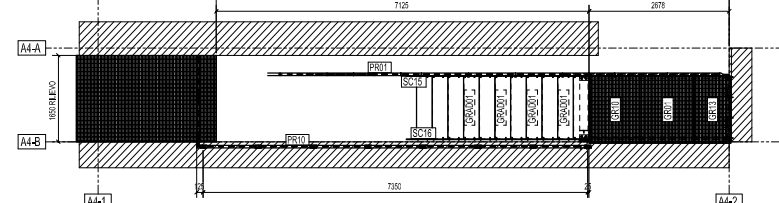
VISTA SU - A4-FILO A4-B



VISTA SU - A4-PIANTA +000

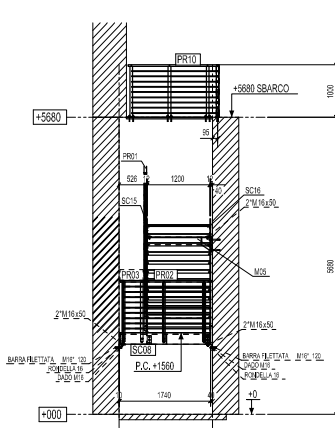
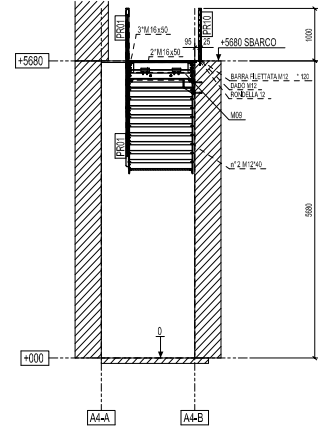


VISTA SU - A4-PIANTA +5680

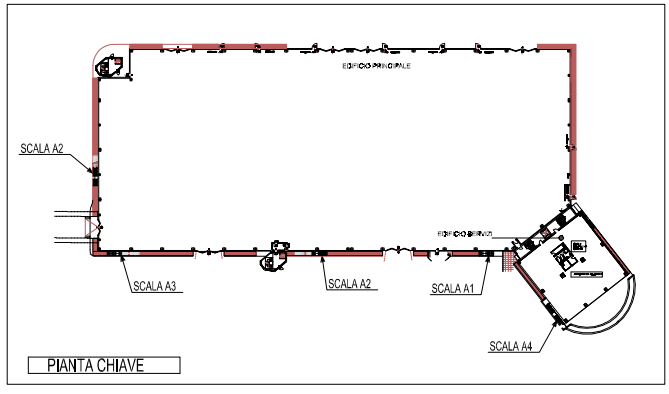
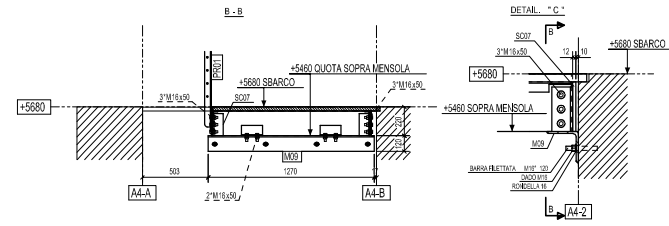
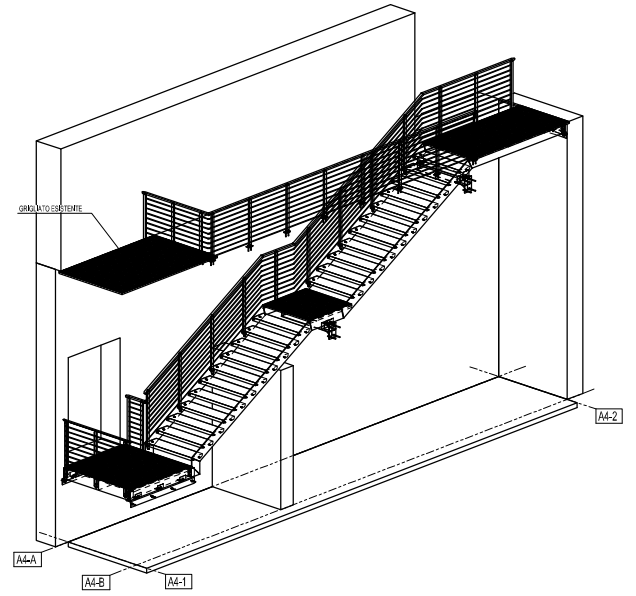


VISTA SU - A4-PICCHETTO A4-2

VISTA SU - A4-PICCHETTO A4-1



ASSONOMETRIA SU - SCALA A4



NOTA PER IL MONTAGGIO:
TUTTI I PARAPETTI VENGONO
FISSATI AI COSCIALI CON
BULLONI M8*35 UNI5933