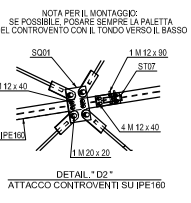
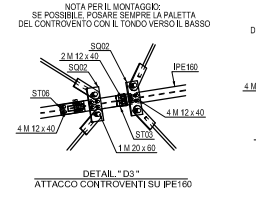
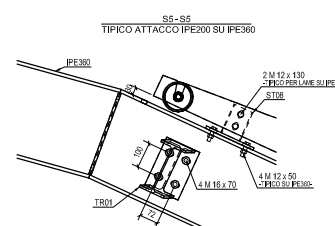
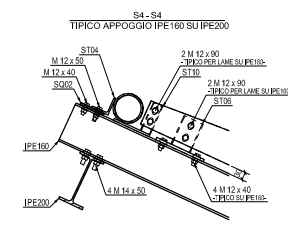
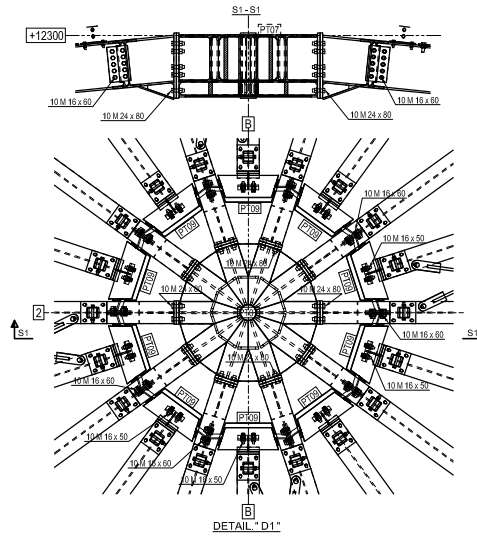
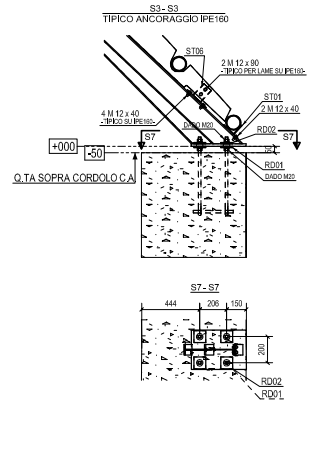
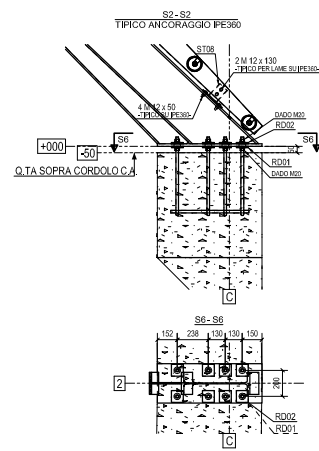


SPICCHIO TIPICO, VALIDO PER CARPENTERIE ACCESSORIE 450  
PER L'ESATTA MARCATURA DEI PORTALI VEDERE PIANTE GENERALE



NOTA PER IL MONTAGGIO:  
SE POSSIBILE, POSARE SEMPRE LA PALETTA  
DEL CONTROVENTO CON IL TONDO VERSO IL BASSO

NOTA PER IL MONTAGGIO:  
SE POSSIBILE, POSARE SEMPRE LA PALETTA  
DEL CONTROVENTO CON IL TONDO VERSO IL BASSO